

**12A250018: Tilt angle retrofit****INFORMATION**

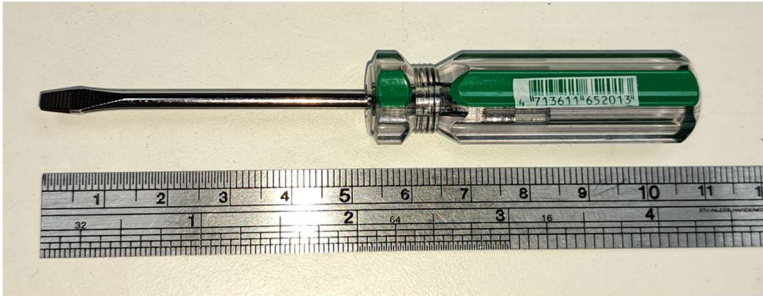
Campaign NO.	12A250018
Campaign Type	Pre-Delivery Check
Info. Version	1.0
Created by	GAIUS EE team
Revised by	GAIUS EE team
Released by	GAIUS After-Sale team
Initial Date	2025/11/10
Revised Date	2025/11/10
Applicable Model	Rapid XL (RP3)
Affected Units	There are 1 vehicles that require inspection. The VINs are as follows:
Campaign Description	1. Replacement of the tilt angle sensor assembly.
Version Difference	

NOTE: The information is intended for use by trained, professional technicians with the knowledge, tools, and equipment to do the job properly and safely. It informs these technicians of conditions that may occur on some vehicles, or provides information that could assist in proper vehicle service. If any concerns, please contact GAIUS technical support mailbox. The information was current at the time of printing.

WORK DESCRIPTION

Required Tool:

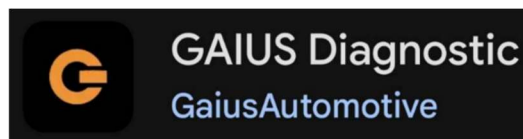
1. Small flat-head screwdriver



2. 1/4-inch ratcheting wrench and M8 socket 、 Hex key Allen wrench kit



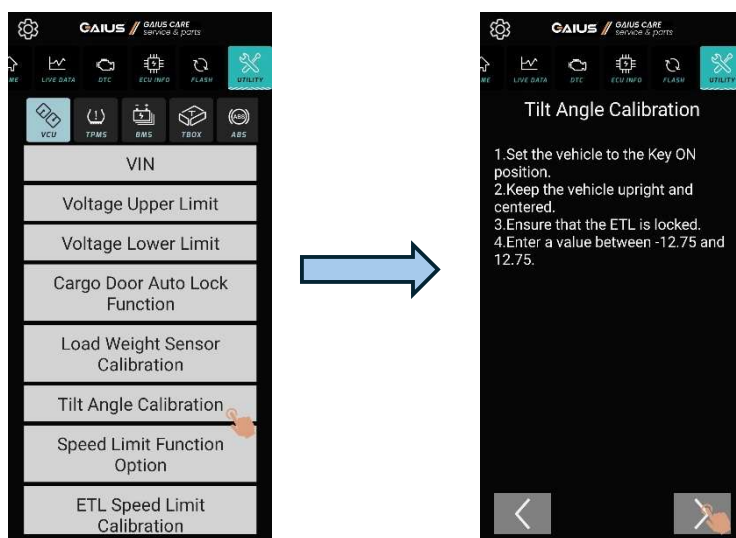
3. GAIUS Diagnostic Tool and Diagnostic APP.



NOTE: The information is intended for use by trained, professional technicians with the knowledge, tools, and equipment to do the job properly and safely. It informs these technicians of conditions that may occur on some vehicles, or provides information that could assist in proper vehicle service. If any concerns, please contact GAIUS technical support mailbox. The information was current at the time of printing.

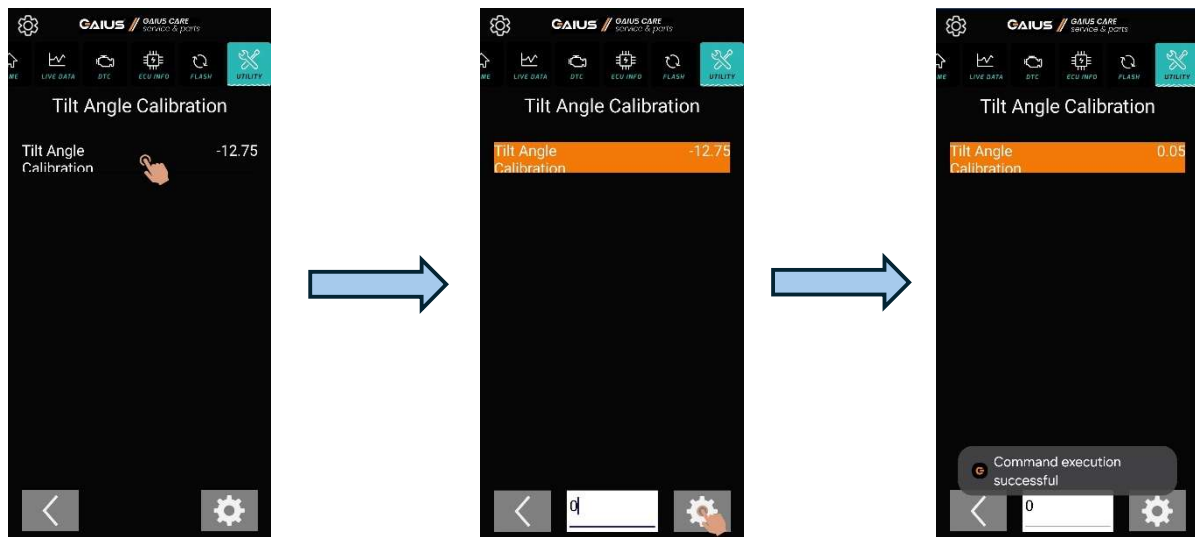
Campaign Procedure:

1. Move the vehicle to a level surface as much as possible, and make sure the headstock is also in a horizontal position.
2. Start the vehicle to **Standby Mode**, then use the diagnostic tool to perform the **Tilt Angle Sensor calibration** procedure. The operation steps are shown on the next page.
3. Tap the "Utility menu", select the VCU icon, and then click "Tilt Angle Calibration." After entering the option, you will see some preparation instructions. Then, click Next to proceed.

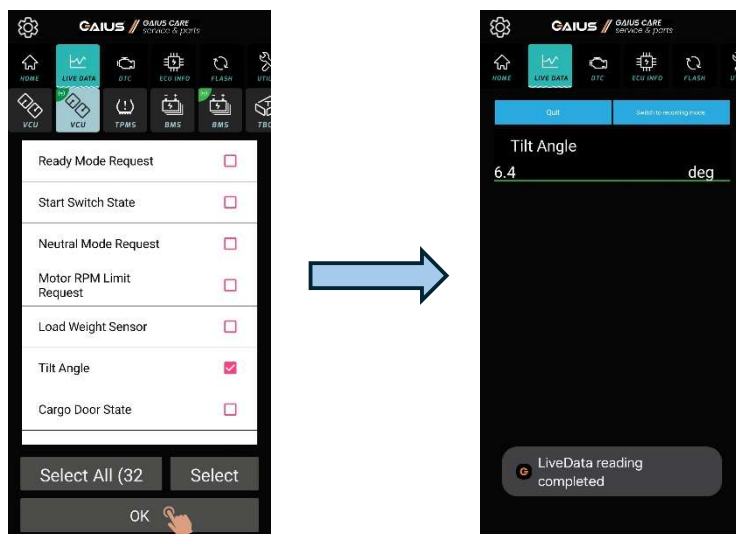


4. After entering, the previously compensated values will be displayed. Tap the value, enter "0" in the field below, and then click the gear icon on the right to write the new value.

NOTE: The information is intended for use by trained, professional technicians with the knowledge, tools, and equipment to do the job properly and safely. It informs these technicians of conditions that may occur on some vehicles, or provides information that could assist in proper vehicle service. If any concerns, please contact GAIOUS technical support mailbox. The information was current at the time of printing.

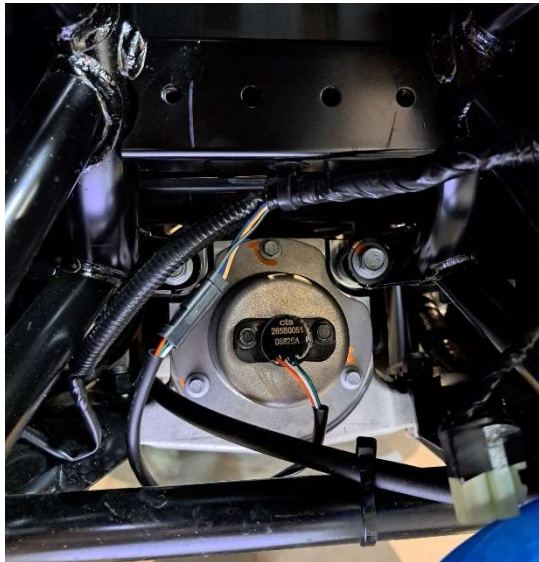


5. Tap the **“LIVE DATA”** icon, then select the second **VCU** icon. Next, choose the **“Tilt Angle”** option and click **“OK”** to view the current tilt angle value. The angle value shown in the illustration is for reference only. Please refer to the **actual value displayed on the vehicle** at that moment, and be sure to take a screenshot for recording.

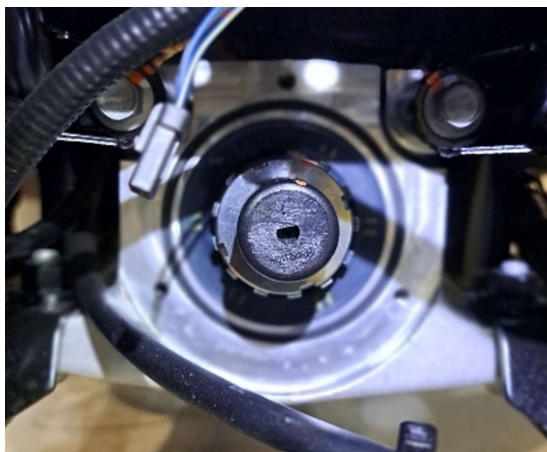


NOTE: The information is intended for use by trained, professional technicians with the knowledge, tools, and equipment to do the job properly and safely. It informs these technicians of conditions that may occur on some vehicles, or provides information that could assist in proper vehicle service. If any concerns, please contact GAIUS technical support mailbox. The information was current at the time of printing.

6. After completing the above steps, switch off the vehicle and prepare to disassemble the parts.
7. After ensuring the vehicle is safely parked and switching the power off, first remove the **front wheel well liner**, then remove the **windshield washer reservoir**. You will see the **Tilt Angle Sensor bracket**.

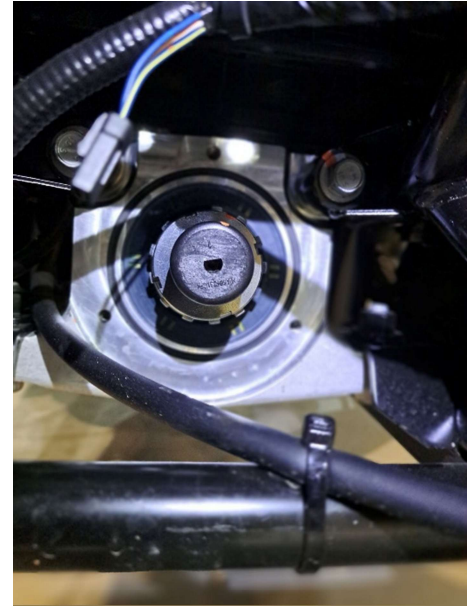


8. Disconnect the angle sensor connector, and use an **M8 socket** to remove the three **M6 screws** on the bracket. Once removed, you will be able to see the **tilt angle sensor adapter cap**.

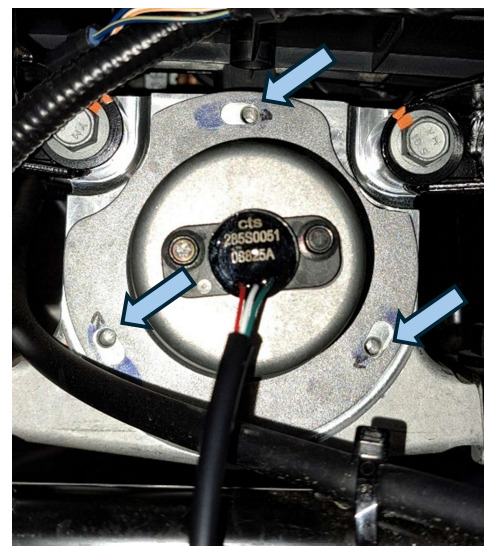


NOTE: The information is intended for use by trained, professional technicians with the knowledge, tools, and equipment to do the job properly and safely. It informs these technicians of conditions that may occur on some vehicles, or provides information that could assist in proper vehicle service. If any concerns, please contact GAIUS technical support mailbox. The information was current at the time of printing.

9. **Before installing the retrofit part**, pay attention to the sensor's **front pins**. Adjust them to closely match the angle of the cap to make assembly easier.



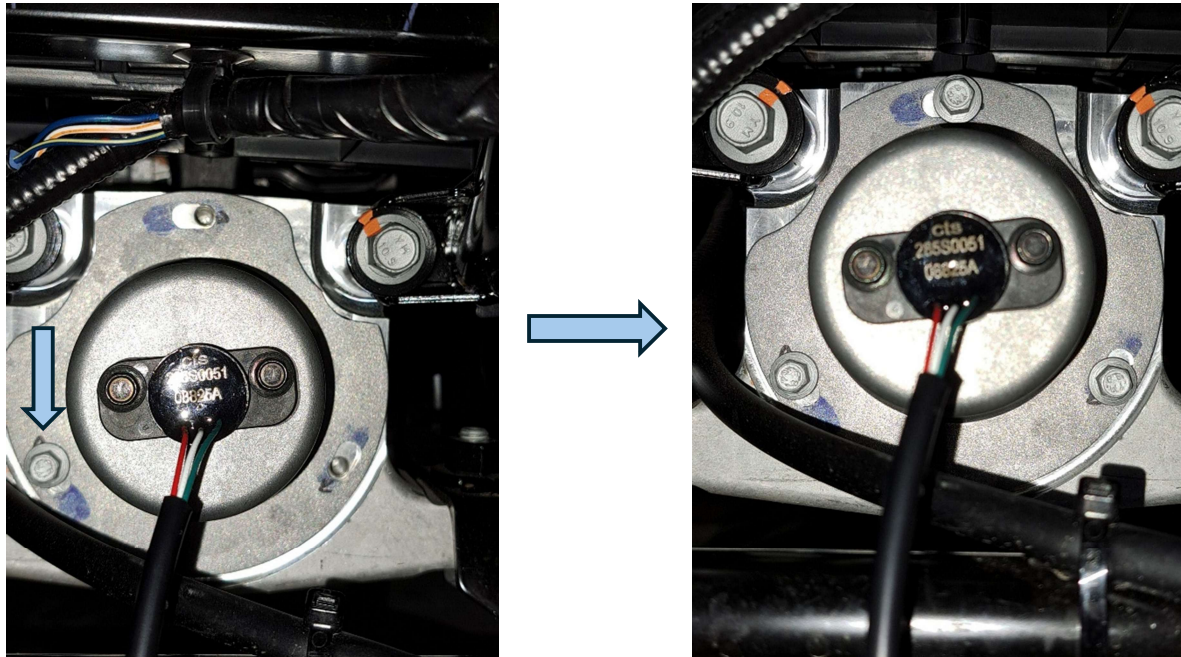
10. For the bracket to fit perfectly with the tilted housing, the sensor's front pins must be securely inserted into the cap. At this point, rotate the bracket counterclockwise until it appears as shown in the image below.



6

NOTE: The information is intended for use by trained, professional technicians with the knowledge, tools, and equipment to do the job properly and safely. It informs these technicians of conditions that may occur on some vehicles, or provides information that could assist in proper vehicle service. If any concerns, please contact GAIUS technical support mailbox. The information was current at the time of printing.

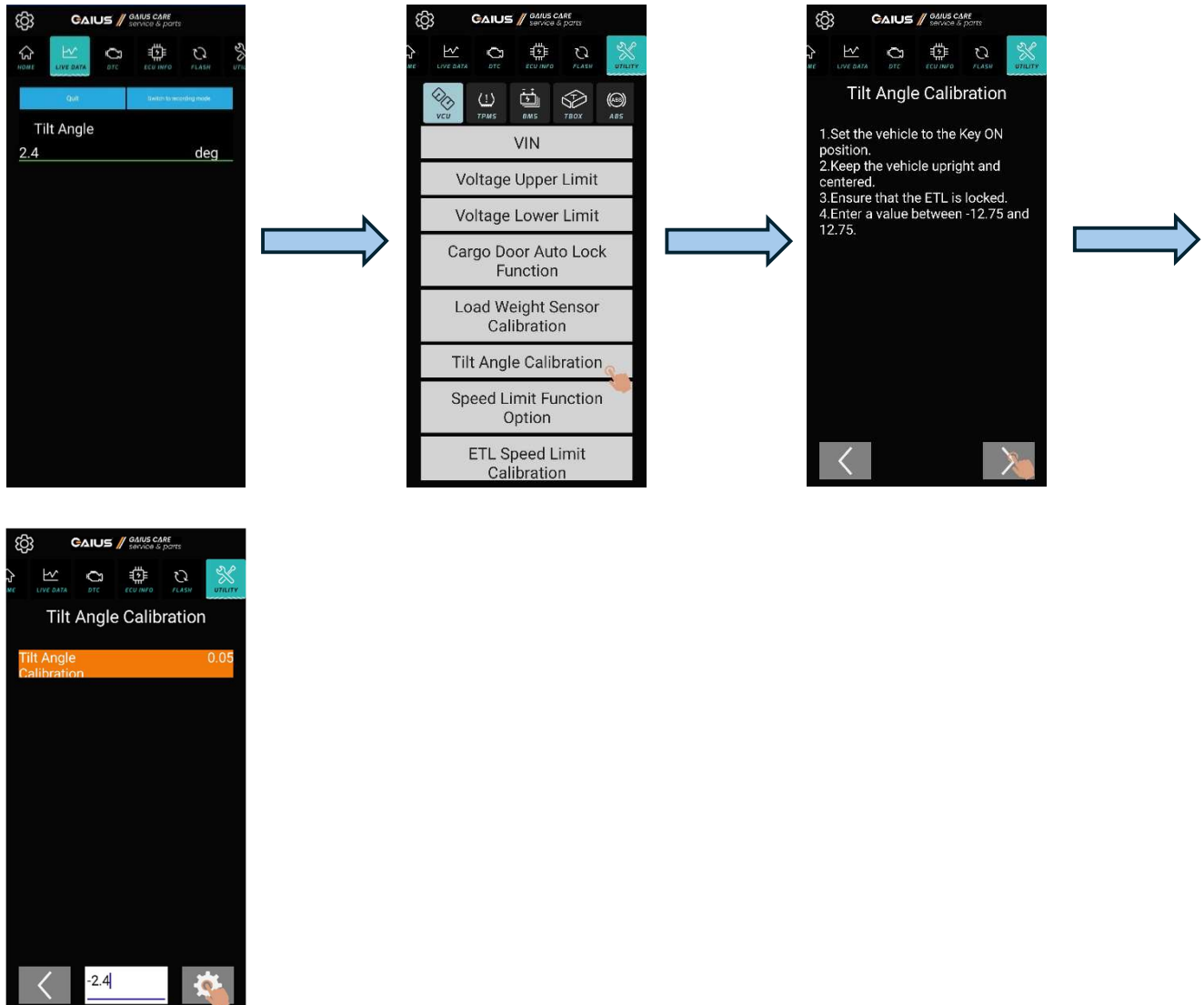
11. Use one hand to hold the bracket fully rotated counterclockwise and use the other hand with a tool to slightly loosen one of the M6 screws back into place. (Do not tie it in.)
After rotating the bracket fully counterclockwise again and holding it in position, install the remaining two screws, tighten them sequentially to a torque of **10 Nm**, and then reapply the alignment marks.



12. Reconnect the tilt angle sensor connector and then switch the vehicle to **Standby Mode**.
13. Connect the diagnostic tool to the vehicle and open the diagnostic app. On the main screen, first tap the “LIVE DATA” icon, then select the second VCU icon. Next, choose the “Tilt Angle” option and click “OK” to view the current tilt angle value.
14. The angle value displayed on the screen should be significantly smaller than the value before the adjustment. For example, as shown in the figure below, if the current display shows 2.4 degrees, we should compensate with a value of “-2.4 degrees.” If it is displayed as a negative value, it needs to be compensated to a positive value.

NOTE: The information is intended for use by trained, professional technicians with the knowledge, tools, and equipment to do the job properly and safely. It informs these technicians of conditions that may occur on some vehicles, or provides information that could assist in proper vehicle service. If any concerns, please contact GAJUS technical support mailbox. The information was current at the time of printing.

15. Tap the "Utility menu", select the VCU icon, and then click "Tilt Angle Calibration." Next, enter the value "-2.4" and then click the calibration button.



16. After completing the above steps, click the "LIVE DATA" icon again, then select the second VCU icon. Next, choose the "Tilt Angle" option and click "OK" to view the current tilt angle value. After performing the compensation calibration, if the displayed angle value falls **within ± 2 degrees, it is within the normal range.**

NOTE: The information is intended for use by trained, professional technicians with the knowledge, tools, and equipment to do the job properly and safely. It informs these technicians of conditions that may occur on some vehicles, or provides information that could assist in proper vehicle service. If any concerns, please contact GAIOUS technical support mailbox. The information was current at the time of printing.

17. If it cannot be calibrated to this range, please repeat steps 1–2 and steps 9–12 until the angle falls within the normal range.



19. After completing the calibration, switch off the vehicle power. Then, sequentially reinstall the windshield washer reservoir and the front wheel well liner to complete this procedure.

WARRANTY LABOR HOUR &

Parts		
P/N	Part Description	QTY.
RP3-G104005-AC	Sensor, Tilt angle	1
RP3-G102011-AA	Tilt Sensor Gasket	1
RP3-G102013-AB	Sealing Cap	1
Labor Hour		
Labor Code	Labor Description	HR
12020	Tilt angle retrofit	1.0

NOTE: The information is intended for use by trained, professional technicians with the knowledge, tools, and equipment to do the job properly and safely. It informs these technicians of conditions that may occur on some vehicles, or provides information that could assist in proper vehicle service. If any concerns, please contact GAIOUS technical support mailbox. The information was current at the time of printing.