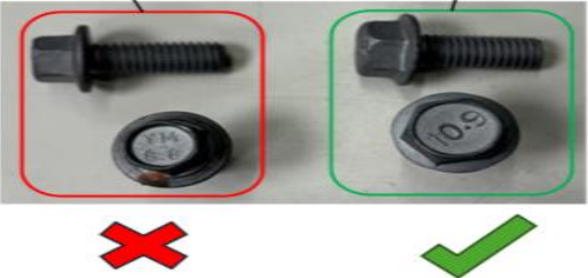


15B250003: Tilt Disc Bolt Replacement.

INFORMATION

Campaign NO.	15B250003
Campaign Type	Service Measure Check
Info. Version	1.0
Created by	GAIUS RD team
Revised by	GAIUS RD team
Released by	GAIUS After-Sale team
Initial Date	10/Jul/2025
Revised Date	10/Jul/2025
Applicable Model	Rapide XL (RP3)
Affected Units	194
Campaign Description	<p>Vehicles supplied to Australia were found to have four loose bolts in the tilt brake disc area. The instructions are to replace these bolts with part number 9102009-M8: M8 x 1.25 x 20mm flanged hex head bolts, Class 10.9, with zinc flake coating. Please have all affected vehicles returned to service partners for this campaign.</p> <div style="text-align: center;"> <div style="display: inline-block; width: 45%;"> <p>9102004-M8 M8-1.25 x 20mm, Flanged Hex Head Bolt, Class 8.8, Zn Flake - Hex Size: 10mm</p> </div> <div style="display: inline-block; width: 45%;"> <p>9102009-M8 M8-1.25 x 20mm, Flanged Hex Head Bolt, Class 10.9, Zn Flake - Hex Size: 12mm</p> </div> </div> 

NOTE: The information is intended for use by trained, professional technicians with the knowledge, tools, and equipment to do the job properly and safely. It informs these technicians of conditions that may occur on some vehicles or provides information that could assist in proper vehicle service. If any concerns, please contact GAIUS technical support mailbox. The information was current at the time of printing.

WORK DESCRIPTION

Required Tool:

1. Special torque wrench tool



2. Medium Strength Thread locker (Loctite 243 or equivalent)



3. Interchangeable Torque Wrench Head (Bi-Hexagonal Type)



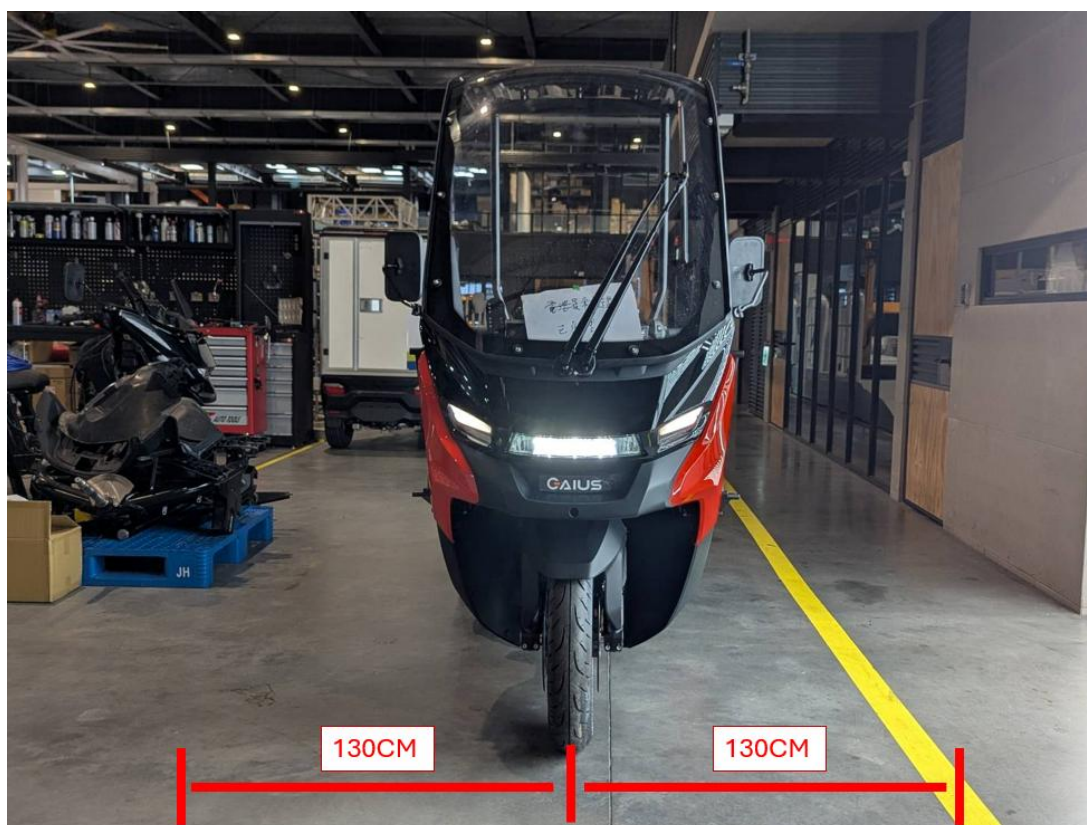
NOTE: The information is intended for use by trained, professional technicians with the knowledge, tools, and equipment to do the job properly and safely. It informs these technicians of conditions that may occur on some vehicles or provides information that could assist in proper vehicle service. If any concerns, please contact GAIOUS technical support mailbox. The information was current at the time of printing.

4. Green indelible paint pen



Campaign Procedure:

1. Park the vehicle in a level maintenance area, ensuring a clearance of at least 130 cm on both left and right sides to allow vehicle tilting.



NOTE: The information is intended for use by trained, professional technicians with the knowledge, tools, and equipment to do the job properly and safely. It informs these technicians of conditions that may occur on some vehicles or provides information that could assist in proper vehicle service. If any concerns, please contact GAIUS technical support mailbox. The information was current at the time of printing.

2. Remove the seat by loosening seat mounting bolts.



3. Lift the front end of seat upward.



4. Disconnect seat sensor connector.



NOTE: The information is intended for use by trained, professional technicians with the knowledge, tools, and equipment to do the job properly and safely. It informs these technicians of conditions that may occur on some vehicles or provides information that could assist in proper vehicle service. If any concerns, please contact GAIUS technical support mailbox. The information was current at the time of printing.

5. Remove seat apron.



6. There are two mounting clips on the top, and one clip on each lower left and right side.



7. Disconnect rollover sensor connector.

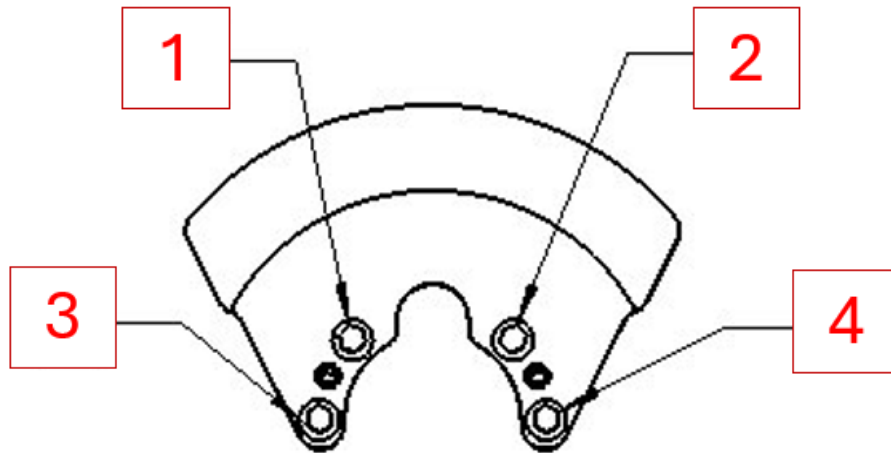


8. Pull seat apron upwards.



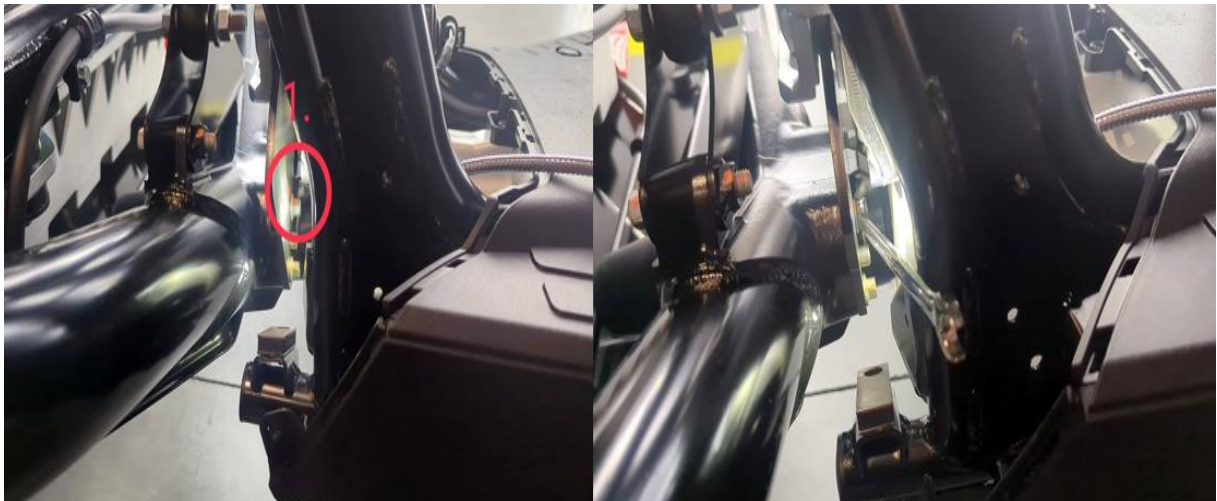
NOTE: The information is intended for use by trained, professional technicians with the knowledge, tools, and equipment to do the job properly and safely. It informs these technicians of conditions that may occur on some vehicles or provides information that could assist in proper vehicle service. If any concerns, please contact GAIUS technical support mailbox. The information was current at the time of printing.

9. Replace disc screws in the order shown in the image



This image is viewed from the front of the vehicle looking toward the rear

10. Use a plum open-end wrench to loosen fixing the screw on upper right side of disc.



NOTE: The information is intended for use by trained, professional technicians with the knowledge, tools, and equipment to do the job properly and safely. It informs these technicians of conditions that may occur on some vehicles or provides information that could assist in proper vehicle service. If any concerns, please contact GAIOUS technical support mailbox. The information was current at the time of printing.

11. Replace with correct screw.



12. Apply thread locker (Loctite 243 or equivalent) to threads of the new screw. Leave the first two threads uncoated and apply thread locker starting from 5th to 6th thread onward.



13. Hand-tighten screw until seated, then use special tool to torque it to 30 N-m.



NOTE: The information is intended for use by trained, professional technicians with the knowledge, tools, and equipment to do the job properly and safely. It informs these technicians of conditions that may occur on some vehicles or provides information that could assist in proper vehicle service. If any concerns, please contact GAIUS technical support mailbox. The information was current at the time of printing.

14. After tightening screw, mark it with a green paint marker.



15. Use a plum open-end wrench to loosen fixing screw on the upper left side of disc.



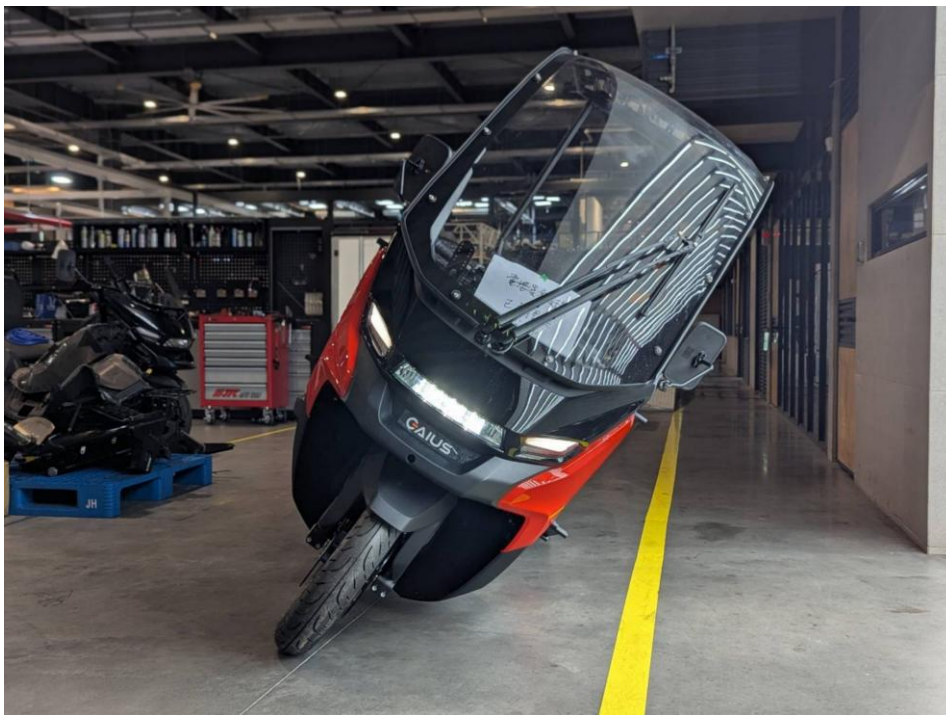
16. Replace with the correct screw. Apply thread locker (Loctite 243 or equivalent) to threads of the new screw, leaving first two threads uncoated. Begin applying thread locker from 5th or 6th thread onward. (Refer to the image in Step 12.)

17. Hand-tighten screw until seated, then use special tool to torque it to 30 N-m.



18. After tightening screw, mark it with a green paint marker. (Refer to the image in Step 14)

19. Tilt vehicle fully to the left.



NOTE: The information is intended for use by trained, professional technicians with the knowledge, tools, and equipment to do the job properly and safely. It informs these technicians of conditions that may occur on some vehicles or provides information that could assist in proper vehicle service. If any concerns, please contact GAIUS technical support mailbox. The information was current at the time of printing.

20. Please ensure that EPB and ETL are fully locked after tilting. Lock icons will be displayed on both Dash and IDU. Power off vehicle only after confirming locks are engaged before proceeding with any work.



21. Use a plum open-end wrench to loosen fixing screw on the down right side of disc.



22. Replace with correct screw. Apply thread locker (Loctite 243 or equivalent) to threads of the new screw, leaving first two threads uncoated. Begin applying thread locker from 5th or 6th thread onward. (Refer to the image in Step 12.)

NOTE: The information is intended for use by trained, professional technicians with the knowledge, tools, and equipment to do the job properly and safely. It informs these technicians of conditions that may occur on some vehicles or provides information that could assist in proper vehicle service. If any concerns, please contact GAIUS technical support mailbox. The information was current at the time of printing.

23. Hand-tighten screw until seated, then use special tool to torque it to 30 N-m.



24. After tightening screw, mark it with a green paint marker. (Refer to the image in Step 14)

25. Tilt vehicle fully to the right.

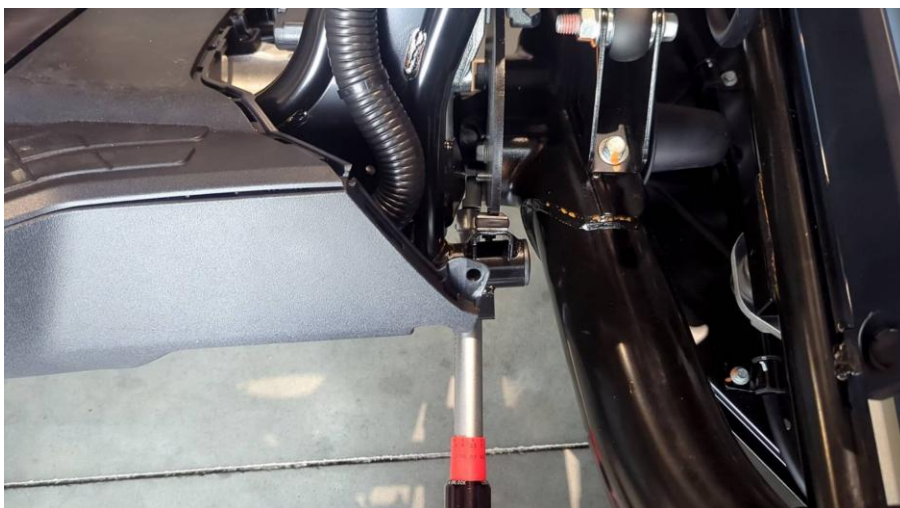


NOTE: The information is intended for use by trained, professional technicians with the knowledge, tools, and equipment to do the job properly and safely. It informs these technicians of conditions that may occur on some vehicles or provides information that could assist in proper vehicle service. If any concerns, please contact GAIUS technical support mailbox. The information was current at the time of printing.

26. Please ensure that EPB and ETL are fully locked after tilting. Lock icons will be displayed on both Dash and IDU. Power off vehicle only after confirming locks are engaged before proceeding with any work. (Refer to the image in Step 20)
27. Use a plum open-end wrench to loosen fixing screw on the down left side of disc.

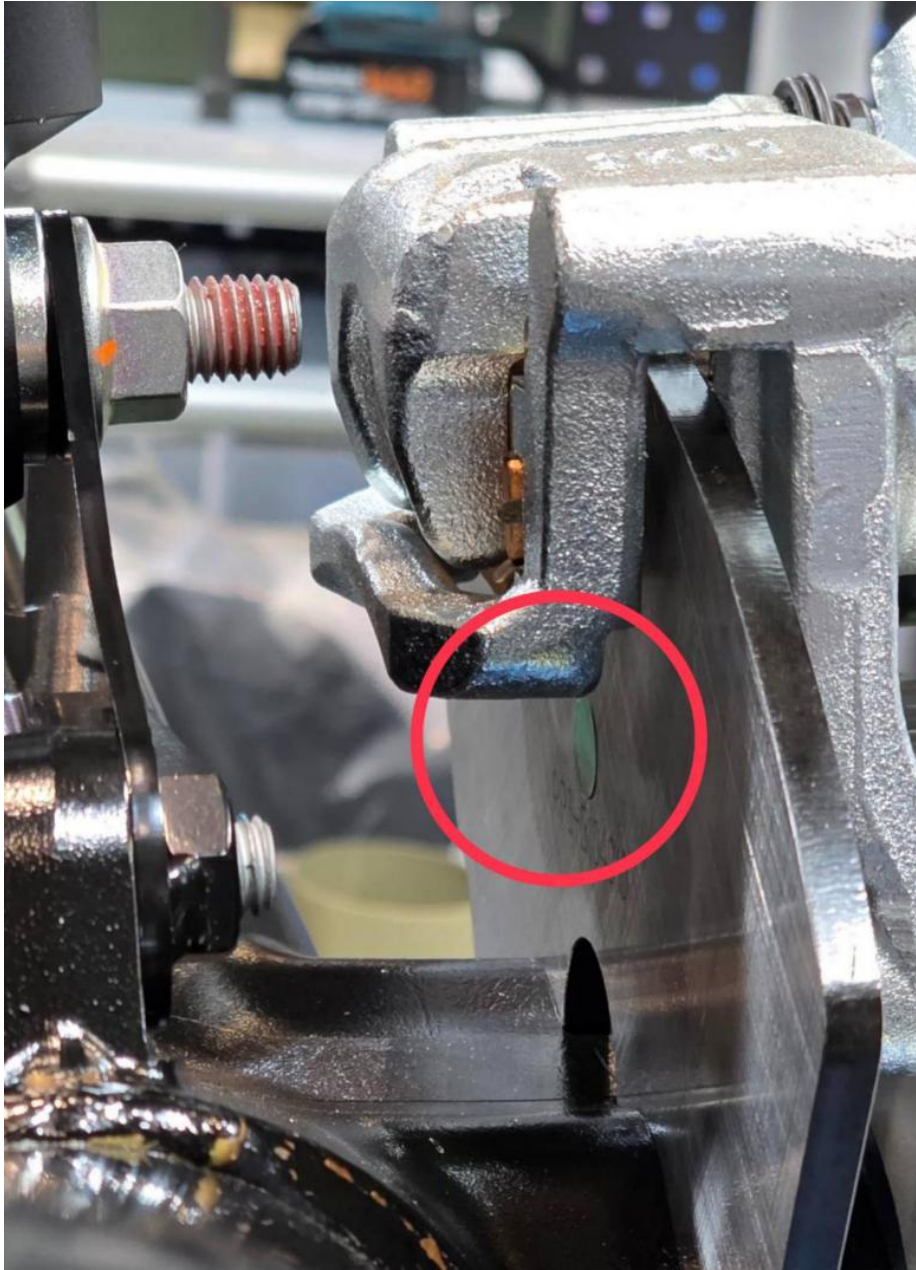


28. Replace with the correct screw. Apply thread locker (Loctite 243 or equivalent) to threads of the new screw, leaving first two threads uncoated. Begin applying thread locker from 5th or 6th thread onward. (Refer to the image in Step 12)
29. Hand-tighten screw until seated, then use special tool to torque it to 30 N-m.



NOTE: The information is intended for use by trained, professional technicians with the knowledge, tools, and equipment to do the job properly and safely. It informs these technicians of conditions that may occur on some vehicles or provides information that could assist in proper vehicle service. If any concerns, please contact GAIUS technical support mailbox. The information was current at the time of printing.

30. After tightening screw, mark it with a green paint marker. (Refer to the image in Step 14)
31. After replacing all four screws, apply a green mark on the back of disc to indicate that new screws have been properly replaced on this vehicle.



32. Reinstall seat apron and connect rollover sensor connector.



33. Before reinstalling seat, ensure seat sensor connector is properly connected.



NOTE: The information is intended for use by trained, professional technicians with the knowledge, tools, and equipment to do the job properly and safely. It informs these technicians of conditions that may occur on some vehicles or provides information that could assist in proper vehicle service. If any concerns, please contact GAIUS technical support mailbox. The information was current at the time of printing.

34. Tighten seat mounting bolts.



35. Fill in Gaius Tilt Quality Recording Form as attached and Email to Gaius technical support team.

LABOR HOUR & PARTS:		
Parts		
P/N	Part Description	QTY.
9102009-M8	M8-1.25 x 20mm, Flanged Hex Head Bolt, Class 10.9 , Zn Flake	4
Labor Hour		
Labor Code	Labor Description	HR
15003	Tilt Disc Bolt Replace	0.5

NOTE: The information is intended for use by trained, professional technicians with the knowledge, tools, and equipment to do the job properly and safely. It informs these technicians of conditions that may occur on some vehicles or provides information that could assist in proper vehicle service. If any concerns, please contact GAIUS technical support mailbox. The information was current at the time of printing.