

Check the spring of tilt system and tighten the screw on the spring**Model: Rapid 3 XL (RP3)****Reason:**

Some vehicles may install improper spring on tilt system, and it won't meet the life of service for the vehicle. For this reason, please check the mark on the spring before delivering to the customer.

Preparation:

N/A

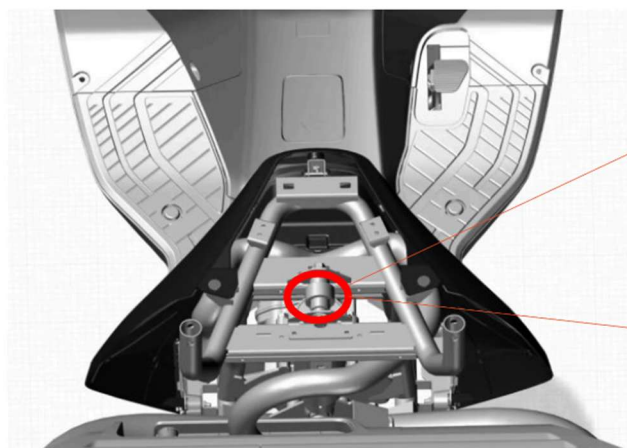
Important Note:

Please don't unscrew the nut between the spring and the bracket. The spring has specific pre-load torque.



Step:

1. Remove the driver's seat. (Refer to service manual 09001)
2. Check the identity letter on the tilt spring and the spring should mark with letter "L" on it.



Incorrect:
FC

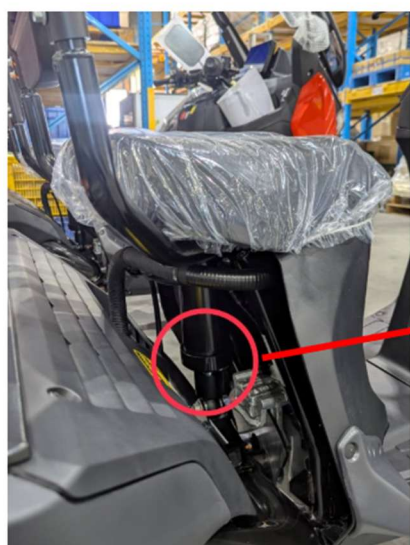


Correct
FC-L

Incorrect spring: Please replace tilt spring. "(Refer to service manual 15005 Tilt spring)
Then, process Step.3

Correct spring: Please follow Step.3

3. Tighten the set screw on the spring. Torque: **3.5 N-M**



Labor hour & Parts:

Parts		
P/N	Description	QTY.
9102003-12	M12-1.75X85mm-Flanged Hex Head Screw	1
9102005-12	M12-1.75X60mm-Flanged Hex Head Screw	1
9102005-10	M12-1. 5X50mm-Flanged Hex Head Screw	1
Labor Hour		
Description		HR
15005 Replace Tilt spring		0.4
Check the spring of tilt system and tighten the screw on the spring		0.1